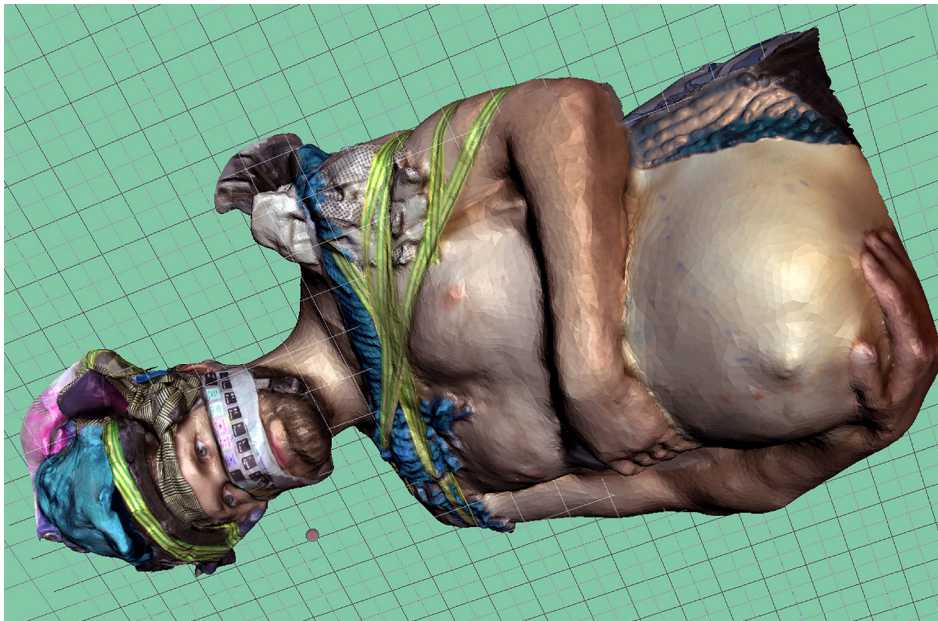


**ZABLUDOWICZ COLLECTION INVITES:
CHARLES RICHARDSON *HEADBONE*
8 OCTOBER–8 NOVEMBER 2015**

Exhibition Preview

Wednesday 7 October, 6–9pm



Charles Richardson, *HEADBONE* production image, 2015. Courtesy the artist

In his videos and installations Charles Richardson explores themes of male identity and uncertainty. Through the symbolic use of bodies, objects and gestures he navigates the idiosyncrasies that permeate the 'lifestyles' of today. Avoiding direct commentary, Richardson employs images of the absurd to renegotiate the strangeness of contemporary existence, in an approach that disarms through dark humour and the staging of infantile wonder.

HEADBONE, Richardson's Invites exhibition, has as its central component a new single-channel video, extending both the technical ambition and emotional complexity of his practice. The video is presented alongside sculptural objects linked to its production and themes, all displayed in an installation constructed from foil-covered board that requires viewers to weave a route through to a final 'chamber'.

As with previous work *Rehearsal* (2014), Richardson creates 3D digital models of his own body, and the bodies of others, which he then animates. Bound in everyday detritus and rendered as hollow shells around which the viewer swoops and pans, the figures appear comic or mute, and full of unspecified psychological resonance. In *HEADBONE* Richardson emphasises the materiality of the sources he captures, using chintzy patterned furniture, hand tools, mobile phones and crumpled packaging as the objects that adorn or anchor the figures.

Sound is a vital component of *HEADBONE*, with a specially recorded version of the song 'Dem Bones' acting as soundtrack. A children's favourite, its lyrical origins are in the Book of Ezekiel from the Old Testament in which the prophet has a vision of God breathing life back into scattered human remains. Richardson's ambitious and distinctive work suggests unexpected connections across different threads of cultural history, imbuing current technological possibilities with echoes of the past. It points to a kind of nostalgic future and the unfulfilled potentialities of the present.

NOTES FOR EDITORS

Charles Richardson (b.1979, Leek, UK) completed an MA in Fine Art at Slade School of Art in 2014. He was the winner of the 2014 Saatchi *New Sensations* prize for his video installation *Rehearsal*. Solo exhibitions include Cabin Gallery, London, 2015. Group exhibitions and screenings include *Treat Yo Self*, Bloc Projects, Sheffield, 2015; *Time Based Academy*, Kunsthalle Düsseldorf, Germany, 2015; *Data Editions*, LOOP, Madrid, Spain and NADA, New York, US, 2015; *Bloomberg New Contemporaries*, World Museum, Liverpool, ICA, London, and Newlyn Art Gallery & The Exchange, Penzance, 2014–15; *Film at Art Basel in Miami Beach*, Miami, US, 2014. *Les Rencontres Internationales*, La Gaîté Lyrique, Berlin, Germany and Palais de Tokyo, Paris, France, 2014.

ZABLUDOWICZ COLLECTION

Zabludowicz Collection is a philanthropic organisation including a growing collection of contemporary art and a programme of international exhibitions, events and artists' residencies. Founded in 1994, the Collection is dedicated to fostering new audiences and a sustainable environment for contemporary art, offering a variety of opportunities and support for artists and art organisations. All of its activities are privately funded and free for the public to access.

The collection contains over 3000 works of art by more than 500 artists, spanning 40 years of art production. Its focus is on emerging art from the late 20th century to the present day and it is in constant development. The Collection has been directed since 2006 by Elizabeth Neilson.

In 2007 the Collection opened its main exhibition space in London, in a 19th Century former Methodist Chapel, where it has worked with artists, curators and the collection to produce exhibitions and events examining contemporary art practice in a public forum. The Collection now also runs an international programme of exhibitions, events, residencies and commissions across four permanent venues in the UK, USA and Finland. The programme is directed by Maitreyi Maheshwari.

VISITOR INFORMATION

Admission: FREE

Thursday–Sunday, 12–6pm or by appointment

Café, Library and Shop

The **Shop** sells limited edition artworks, 50% of the proceeds go directly to the artist.

shop.zabludowiczcollection.com

Address:

176 Prince of Wales Road, London NW5 3PT
+44 (0)207 428 8940

info@zabludowiczcollection.com

zabludowiczcollection.com

[Twitter.com/Zabludowicz_Col](https://twitter.com/Zabludowicz_Col)

instagram.com/zabludowicz_collection

Transport (TFL stations):

Chalk Farm or Kentish Town West

PRESS INFORMATION

Hannah Gompertz, Senior Account Executive at SUTTON

+44 (0)207 183 3577

Hannah@suttonpr.com